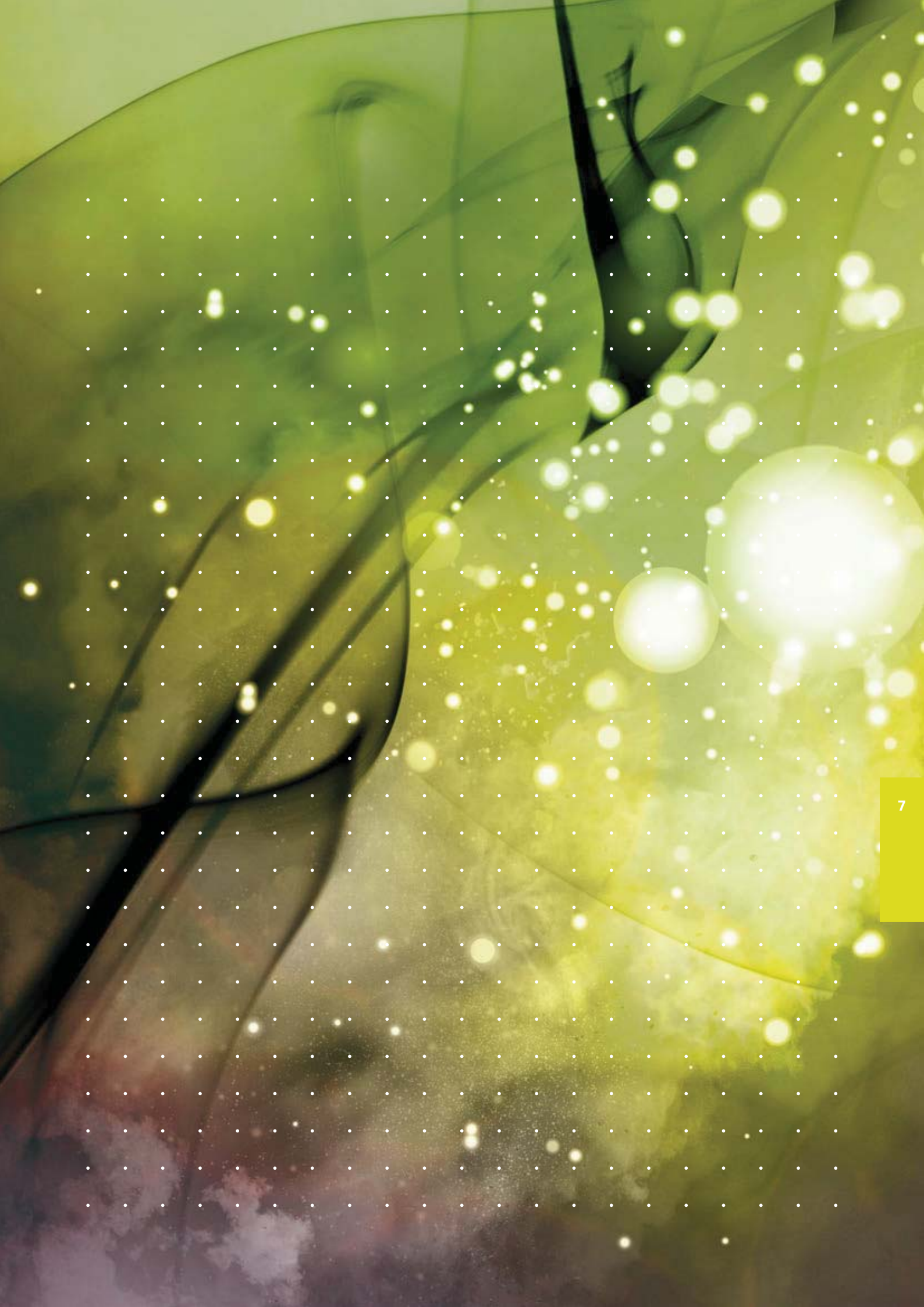


# ACCESSORIES







- 36 111
- 36 112
- 36 110
- 36 114
- 36 109
- 36 113

## MOTUS®

### Spare components MOTUS®

Type	Pack size	Weight kg/100 u.		Part no.	
16A fuse for 0.6A and 2.4A versions	3	2.8		<b>31 567</b>	21
20A fuse for 9A version	3	2.8		<b>31 568</b>	21
30A fuse for 9A version for motors with heavy starting	3	2.8		<b>31 569</b>	21
0.075 - 0.6A electronics module for direct/reversing starters	1	57.1		<b>36 109</b>	21
0.18 - 2.4A electronics module for direct/reversing starters	1	57.1		<b>36 110</b>	21
1.5 - 9A electronics module for direct/reversing starters	1	57.1		<b>36 111</b>	21
adapter for MOTUS®30Compact	1	9.3		<b>36 113</b>	21
adapter for MOTUS®60Classic	1	11.0		<b>36 114</b>	21
adapter für DIN-Tragschiene	1	12.8		<b>36 112</b>	21
<b>Accessories, for DIN rail model</b>					
plug connector with cable connection, 2 devices	1	7.6		<b>36 902</b>	21
plug connector with cable connection, 3 devices	1	9.0		<b>36 903</b>	21
plug connector with cable connection, 4 devices	1	10.9		<b>36 904</b>	21



36 209	36 230	36 216	36 909	36 906
--------	--------	--------	--------	--------

## SmartWire-DT® components

### Module for connection to SmartWire-DT®

Type	Pack size	Weight kg/100 u.	Part no.	
for all MOTUS®	1	6.5	36 209	21
for all EQUES® adapters in 60Classic up to 80A, 3 inputs, 2 outputs	1	8.0	36 230	21

### Gateway and Powerfeed

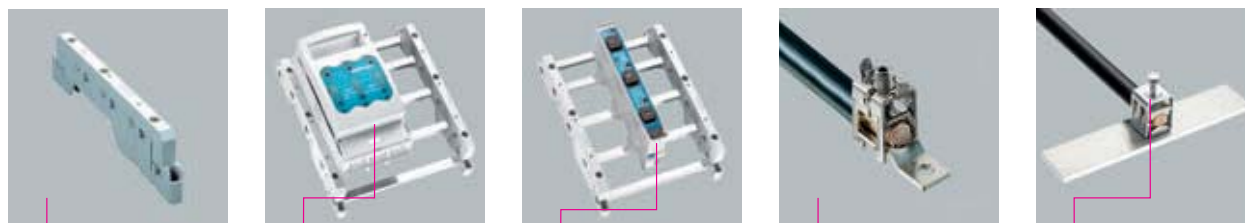
gateway Profibus DP to SmartWire-DT	1	16.0	36 216	21
gateway CANopen to SmartWire-DT	1	16.0	36 218	21
gateway EtherNet/IP to SmartWire-DT	1	16.0	36 219	21
gateway Profinet to SmartWire-DT	1	16.0	36 220	21
power feed 24V for SmartWire-DT	1	17.0	36 215	21

### Bus line and plug

ribbon cable, 8-pole, 3m long with 2 flat plugs	1	5.5	36 905	21
device plug	10	5.5	36 906	21
flat plug	10	0.5	36 907	21
network termination	1	1.0	36 908	21
bridge for bridging open sections of device plugs	1	1.0	36 912	21
coupling for flat plug	1	1.0	36 913	21
USB cable for connecting gateway to PC	1	1.0	36 911	21

### Crimping tools

pliers for device plug	1	62.0	36 909	21
pliers for flat plug (bus termination, gateway)	1	62.0	36 910	21



01 138	33 075	31 578	01 890	01 429
--------	--------	--------	--------	--------

## Busbar system special solutions

### Busbar support, 60mm-System, 3, 4, 5-pole, for VMS (GE) and AKi (Spelsberg) enclosure range

Type	Pack size	Weight	Part no.
		kg/100 u.	
for 3x (12, 20, 30 x 10) and 2x (12, 20, 25 x 5, 10) busbars	30	16.7	01 138 06

### Reducer, for 5mm busbars

for part no. 01 138 (3 pcs needed for a busbar support)	100	0.1	01 170 06
---	-----	-----	-----------

### Busbar support, suitable for Striebel & John system

Type	For busbars	Pack size	Weight	Part no.
			kg/100 u.	
3-pole with internal screw holes	12, 20, 30 x 5, 10	10	10.0	01 603 06
1-pole, for connection to 01 603 and for mounting individually; with integrated end cover		1	4.1	01 355 06

### End cover

for busbar support 01 603	10	2.0	01 573 06
---------------------------	----	-----	-----------

### QUADRON®60Classic, NH bus-mounting fuse switch disconnecter, top/bottom connection, 3-pole with short connection module for 5-pole busbar systems and distribution boards

Type	Rated current	Size	Pack size	Weight	Part no.
				kg/100 u.	
box terminal	160A	NH00	1	100.0	33 075 09
connection screw M8	160A	NH00	1	100.0	33 079 09
connection screw M10	250A	NH1	1	357.0	33 194 09

### Cover frame

Type	Pack size	Weight	Part no.
		kg/100 u.	
for ISO enclosure type VMS	10	16.6	01 139 06

### Reserve section cover, for use with cover frame 01 139 only

54mm wide, pitch 3 x 18mm	10	4.5	79 738 06
variable 36 - 64mm with 2 pieces	10	3.2	79 859 06

### Connector latch with brace terminal, for connecting equipment

Busbars	For use up to max.	Pack size	Weight	Part no.
			kg/100 u.	
for flat busbars up to 30 x 20	630A	3	32.3	01 888 07
for Cu and Al conductors 150 - 300mm <sup>2</sup> , rm, sm, f	600A	3	36.6	01 890 07

\* not maintenance-free if aluminium conductors are used (see page 8/2)

### FIBUS®, universal conductor terminal for drilled flat busbars

16 - 240mm <sup>2</sup>	630A	3	44.0	01 429 07
max. 350A current carrying capacity of the terminal point with aluminium conductor				



05 800

05 873

## Insulators

### Insulator, with female thread

Total height mm	Female thread both sides	Length across flats	Rated voltage	Pack size	Weight kg/100 u.	Part no.
20	M6	17	600V	100	1.2	05 779 06
30	M6	30	1500V	20	5.4	05 780 06
30	M8	30	1500V	20	5.3	05 792 06
35	M6	32	1500V	20	7.0	05 781 06
35	M8	32	1500V	20	7.2	05 782 06
40	M8	40	2000V	20	10.2	05 783 06
40	M10	40	2000V	20	10.8	05 784 06
40	M12	40	2000V	20	11.8	05 791 06
45	M8	46	2000V	20	14.8	05 786 06
45	M10	46	2000V	20	15.3	05 787 06
50	M8	36	2000V	20	10.9	05 790 06
50	M10	36	2000V	20	12.2	05 788 06
60	M10	40	3000V	20	16.2	05 789 06

### Insulator, with stud bolt and female thread

30	M6	30	1500V	20	5.3	05 800 06
35	M6	32	1500V	20	6.0	05 801 06
35	M8	32	1500V	20	8.2	05 802 06



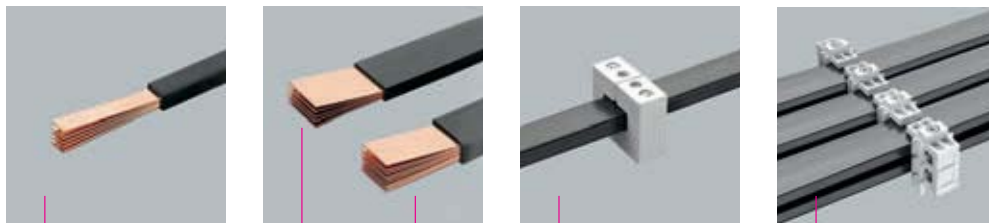
01 127	01 114	01 928	08 824	08 825	01 120	01 119
--------	--------	--------	--------	--------	--------	--------

<b>PE and N busbar, rating 63A, self-locking</b>						
Connection mm <sup>2</sup>	Number of contact positions	Dimensions L x W x D	Pack size	Weight kg/100 u.		Part no.
10	8	52 x 9 x 6.5	100	2.2		01 126 06
	12	78 x 9 x 6.5	100	3.2		01 127 06
	16	104 x 9 x 6.5	100	4.3		01 128 06
	24	156 x 9 x 6.5	50	6.7		01 129 06
	151	1000 x 9 x 6.5	1	43.0		01 130 06
<b>Terminal</b>						
35	suitable for PE and N busbars 01 126 - 01 130		100	1.4		01 114 07
<b>PE and N busbar, with terminal clamps, rating 63A, self-locking</b>						
Number of terminal clamps incoming 10mm <sup>2</sup>	Number of contact points outgoing 10mm <sup>2</sup>	Dimensions L x W x D	Pack size	Weight kg/100 u.		Part no.
without terminal clamp	6	62 x 9 x 6.5	100	2.5		01 926 06
1 terminal clamp	12	124 x 9 x 6.5	50	5.5		01 927 06
4 terminal clamps	18	187 x 9 x 6.5	60	9.6		01 928 06
3 terminal clamps	24	249 x 9 x 6.5	50	11.5		01 929 06
4 terminal clamps	30	312 x 9 x 6.5	50	16.7		01 930 06
5 terminal clamps	36	374 x 9 x 6.5	100	17.6		01 931 06
15 terminal clamps	96	1000 x 9 x 6.5	1	48.0		01 932 06
for a 10mm <sup>2</sup> incoming connection, the terminal clamp must be rotated						
<b>Terminal clamp</b>						
Connection mm <sup>2</sup>	Type		Pack size	Weight kg/100 u.		Part no.
25	suitable for PE and N busbar 01 932		100	0.3		08 824 06
<b>Clip-on mounting, for 35mm mounting rail DIN EN 60 715</b>						
Type			Pack size	Weight kg/100 u.		Part no.
suitable for PE and N busbars 01 126 - 01 129 and 01 926 - 01 932			100	0.2		08 825 06
<b>Terminal support, for PE and N busbars</b>						
for screw mounting			50	1.4		01 120 06
for clip-on mounting			50	1.6		01 121 06
for screw mounting			50	0.1		01 119 06



Rated current	Connection	Type	Pack size	Weight	Part no.	
63A	*	7 x 10mm <sup>2</sup>	50	2.7	<b>01 143</b>	06
63A	*	7 x 10mm <sup>2</sup>	50	2.7	<b>01 144</b>	06
63A	**	7 x 10mm <sup>2</sup>	50	2.9	<b>01 257</b>	06
63A	**	7 x 10mm <sup>2</sup>	50	2.9	<b>01 258</b>	06
* for fixing to flat busbars 12 x 2mm						
** for clip-on mounting						
<b>Insulated PE and N terminal</b>						
<b>Connecting terminal</b>						
160A	70mm <sup>2</sup> (clamp on both sides)	60mm	10	9.1	<b>03 193</b>	10
		125mm	10	14.6	<b>03 173</b>	10
250A	120mm <sup>2</sup> (screw M10 on both sides)	100mm	10	16.8	<b>03 195</b>	10
		200mm	10	30.6	<b>03 196</b>	10
630A	240mm <sup>2</sup> (screw M12 on both sides)	100mm	10	25.6	<b>03 197</b>	10
		200mm	10	42.0	<b>03 198</b>	10
<b>Neutral conductor, disconnectable, screw-on and clip-on mounting</b>						
63A	tunnel terminal		50	2.6	<b>05 188</b>	10
<b>Neutral conductor, disconnectable, screw-on mounting</b>						
160A	clamp on both sides	120mm	10	19.2	<b>03 668</b>	10
250A	screw on both sides	120mm	10	19.5	<b>03 657</b>	10
400A	screw on both sides	200mm	3	58.9	<b>03 757</b>	10
630A	screw on both sides	200mm	3	58.9	<b>03 213</b>	10
<b>Label, self-adhesive, Ø 15mm</b>						
PE	Colour: green-yellow		200	0.1	<b>78 442</b>	06
N	Colour: blue		200	0.1	<b>78 443</b>	06
PEN	Colour: green-yellow / blue		200	0.1	<b>78 447</b>	06





01 196	01 612	01 613	01 298	01 299
--------	--------	--------	--------	--------

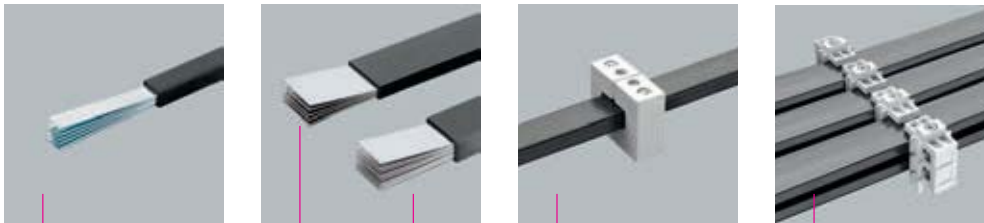
**Laminated copper busbars, plain, insulated (105°C), length 2m**

Dimensions	Rated current 50K	Cross section mm <sup>2</sup>	Pack size	Weight * kg/100 u.	Part no.	
3 x 9 x 0.8	162A	21.6	1	40.4	01 054	06
6 x 9 x 0.8	240A	43.2	1	80.6	01 194	06
4 x 15.5 x 0.8	279A	49.6	1	92.8	01 196	06
6 x 15.5 x 0.8	350A	74.4	1	139.2	01 035	06
10 x 15.5 x 0.8	470A	124	1	232.0	01 583	06
3 x 20 x 1	326A	60	1	112.4	01 027	06
6 x 20 x 1	477A	120	1	225.0	01 028	06
10 x 20 x 1	640A	200	1	375.0	01 029	06
4 x 24 x 1	438A	96	1	180.0	01 253	06
5 x 24 x 1	495A	120	1	225.0	01 611	06
6 x 24 x 1	547A	144	1	270.0	01 255	06
8 x 24 x 1	641A	192	1	360.0	01 323	06
10 x 24 x 1	727A	240	1	450.0	01 184	06
5 x 32 x 1	617A	160	1	299.0	01 612	06
10 x 32 x 1	894A	320	1	598.0	01 613	06
5 x 40 x 1	736A	200	1	373.0	01 614	06
6 x 40 x 1	809A	240	1	447.6	01 256	06
10 x 40 x 1	1053A	400	1	746.0	01 615	06
5 x 50 x 1	880A	250	1	466.0	01 060	06
8 x 50 x 1	1114A	400	1	746.0	01 343	06
10 x 50 x 1	1244A	500	1	932.0	01 509	06
5 x 63 x 1	1061A	315	1	590.0	01 324	06
10 x 63 x 1	1481A	630	1	1180.0	01 510	06
10 x 80 x 1	1777A	800	1	1490.0	01 061	06
10 x 100 x 1	2110A	1000	1	1870.0	01 273	06

\* the weight specified is the pure copper weight, it does not include the weight of the insulation.

**Holder, for laminated busbars**

Type	Pack size	Weight kg/100 u.	Part no.	
for 1x lam. Cu of 6 x 15.5 x 0.8 to 10 x 63 x 1	3	11.3	01 298	06
for multiple fastening for lam. Cu of 5 x 40 x 1 to 10 x 63 x 1 mounting on standard C-rail	4	16.6	01 299	06



01 089	01 095	01 096	01 298	01 299
--------	--------	--------	--------	--------

Laminated copper busbars, tin-plated, insulated (105°C), length 2m						
Dimensions	Rated current	Cross section	Pack size	Weight *		Part no.
	50K	mm <sup>2</sup>		kg/100 u.		
6 x 9 x 0.8	240A	43.2	1	80.6		01 084
4 x 15.5 x 0.8	279A	49.6	1	92.8		01 089
6 x 15.5 x 0.8	350A	74.4	1	139.2		01 090
10 x 15.5 x 0.8	470A	124	1	232.0		01 091
6 x 20 x 1	477A	120	1	225.0		01 063
10 x 20 x 1	640A	200	1	375.0		01 064
5 x 24 x 1	494A	120	1	225.0		01 075
10 x 24 x 1	727A	240	1	450.0		01 076
5 x 32 x 1	617A	160	1	299.0		01 095
10 x 32 x 1	894A	320	1	598.0		01 096
5 x 40 x 1	736A	200	1	373.0		01 097
10 x 40 x 1	1053A	400	1	746.0		01 099
5 x 50 x 1	880A	250	1	466.0		01 112
10 x 50 x 1	1244A	500	1	932.0		01 113
10 x 63 x 1	1481A	630	1	1180.0		01 123

\* the weight specified is the pure copper weight, it does not include the weight of the insulation.

Holder, for laminated busbars						
Type	Pack size	Weight		Part no.		
		kg/100 u.				
for 1x lam. Cu of 6 x 15.5 x 0.8 to 10 x 63 x 1	3	11.3		01 298		06
for multiple fastening for lam. Cu of 5 x 40 x 1 to 10 x 63 x 1	4	16.6		01 299		06
mounting on standard C-rail						



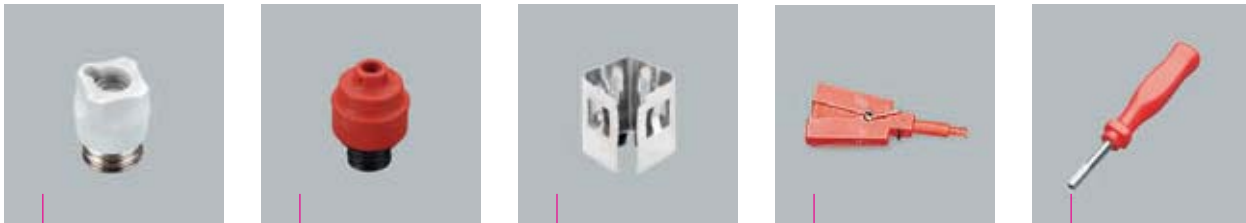
<b>01 694</b>	<b>01 718</b>	<b>01 727</b>	
---------------	---------------	---------------	--

**D0 fuses**  
to DIN VDE 0636-3 / IEC / EN 60269-3

gG (gL) fuse link								
Size	Rated current	Rated voltage	Rated breaking capacity	Pack size	Weight kg/100 u.		Part no.	
D01	2A	400V AC / 250V DC	50kA AC / 8kA DC	10	0.6		<b>01 685</b>	03
	4A			10	0.6		<b>01 686</b>	03
	6A			10	0.6		<b>01 687</b>	03
	10A			10	0.6		<b>01 688</b>	03
	16A			10	0.7		<b>01 689</b>	03
D02	20A	400V AC / 250V DC	50kA AC / 8kA DC	10	1.2		<b>01 690</b>	03
	25A			10	1.3		<b>01 691</b>	03
	35A			10	1.3		<b>01 692</b>	03
	50A			10	1.5		<b>01 693</b>	03
	63A			10	1.5		<b>01 694</b>	03

Ferrule gauge ring for E14								
Size	Rated current	Pack size	Weight kg/100 u.				Part no.	
D01	2A	50	0.1				<b>01 715</b>	03
	4A	50	0.1				<b>01 716</b>	03
	6A	50	0.1				<b>01 717</b>	03
	10A	50	0.1				<b>01 718</b>	03

Ferrule gauge piece for E18								
Size	Rated current	Pack size	Weight kg/100 u.				Part no.	
D01	2A	50	0.1				<b>01 724</b>	03
	4A	50	0.1				<b>01 725</b>	03
	6A	50	0.1				<b>01 726</b>	03
	10A	50	0.1				<b>01 727</b>	03
	16A	50	0.1				<b>01 728</b>	03
D02	20A	50	0.1				<b>01 719</b>	03
	25A	50	0.1				<b>01 720</b>	03
	35A	50	0.1				<b>01 721</b>	03
	50A	50	0.1				<b>01 722</b>	03



31 006	31 909	01 729	01 730	31 913
--------	--------	--------	--------	--------

### D0 fuses

to DIN VDE 0636-3 / IEC / EN 60269-3

#### Screw cap, 400V AC / 250V DC

Size	Type	Pack size	Weight kg/100 u.	Part no.	
D01 / E14	porcelain	20	1.9	01 103	03
D01 / E14	plastic	20	1.2	31 005	03
D02 / E18	porcelain	20	1.8	01 104	03
D02 / E18	plastic	20	1.3	31 006	03
D01 / E18	* plastic	20	1.4	31 104	03

\* with reducing piece for D01

#### Retaining cap

D01 / E14	industrial	36	1.1	31 909	03
	utility	36	1.1	31 908	03
D02 / E18	industrial	36	1.1	31 910	03
	utility	36	1.1	31 904	03

#### Special retaining spring

Size	Rated current	Pack size	Weight kg/100 u.	Part no.	
D01 / E18	2 - 16A	50	0.1	01 729	03

#### Gauge ring tool

Size	Pack size	Weight kg/100 u.	Part no.	
D01 - D03	1	2.8	01 730	03

#### Special key for retaining cap

Size	Type	Pack size	Weight kg/100 u.	Part no.	
D / D0	industrial	1	3.6	31 913	03



<b>01 676</b>	<b>01 706</b>	<b>01 547</b>	
---------------	---------------	---------------	--

## D fuses

to DIN VDE 0636-3 / IEC / EN 60269-3

### gG (gL) fuse link

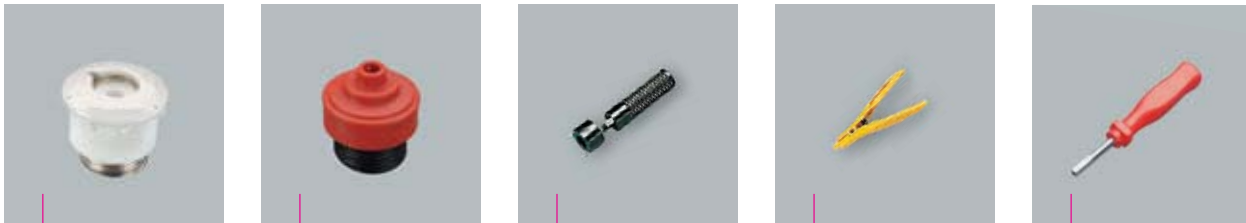
Size	Rated current	Rated voltage	Rated breaking capacity	Pack size	Weight kg/100 u.	Part no.	
E27	2A	500V AC / DC	50kA	5	2.7	<b>01 670</b>	03
	4A			5	2.8	<b>01 671</b>	03
	6A			5	2.8	<b>01 672</b>	03
	10A			5	2.8	<b>01 673</b>	03
	16A			5	2.9	<b>01 674</b>	03
	20A			5	3.1	<b>01 675</b>	03
	25A			5	3.2	<b>01 676</b>	03
E33	35A	500V AC / DC	50kA	5	4.8	<b>01 677</b>	03
	50A			5	5.0	<b>01 678</b>	03
	63A			5	5.2	<b>01 679</b>	03

### Screw-in gauge ring

Size	Rated current	Pack size	Weight kg/100 u.	Part no.	
E27 / E33	2A	25	1.3	<b>01 741</b>	03
	4A	25	1.2	<b>01 701</b>	03
	6A	25	1.2	<b>01 702</b>	03
	10A	25	1.2	<b>01 703</b>	03
	16A	25	1.2	<b>01 704</b>	03
	20A	25	1.2	<b>01 705</b>	03
	25A	25	1.2	<b>01 706</b>	03
E33	35A	25	2.0	<b>01 707</b>	03
	50A	25	2.0	<b>01 708</b>	03
	63A	25	2.0	<b>01 709</b>	03

### Gauge ring

E27	2A	50	0.4	<b>01 541</b>	03
	4A	50	0.4	<b>01 542</b>	03
	6A	50	0.4	<b>01 543</b>	03
	10A	50	0.4	<b>01 544</b>	03
	16A	50	0.4	<b>01 545</b>	03
	20A	50	0.4	<b>01 546</b>	03
	25A	50	0.4	<b>01 547</b>	03
E33	35A	50	0.4	<b>01 548</b>	03
	50A	50	0.4	<b>01 549</b>	03
	63A	50	0.4	<b>01 550</b>	03



01 098	31 911	01 998	01 059	31 913
--------	--------	--------	--------	--------

## D fuses

to DIN VDE 0636-3 / IEC / EN 60269-3

### Screw cap, 500V AC / DC

Size	Type	Pack size	Weight kg/100 u.	Part no.	
E27	porcelain	20	4.8	01 098	03
	plastic	20	2.8	31 098	03
E33	porcelain	20	7.9	01 100	03
	plastic	20	4.8	31 100	03

### Retaining cap

E27	industrial	20	1.7	31 911	03
	utility	20	1.7	31 905	03
E33	industrial	10	2.6	31 912	03
	utility	10	2.6	31 906	03

### Gauge screw key

Size	Pack size	Weight kg/100 u.	Part no.	
E27 / E33	1	4.7	01 998	03

### Gauge ring key

E27 / E33	1	3.7	01 059	03
-----------	---	-----	--------	----

### Special key for retaining cap

Size	Type	Pack size	Weight kg/100 u.	Part no.	
D / D0	industrial	1	3.6	31 913	03



03 530

03 162

## NH fuses

to DIN VDE 0636-2 / IEC / EN 60269-2

### gG (gL) fuse link

Size	Rated voltage AC	Rated voltage DC	Rated current	Pack size	Weight kg/100 u.	Part no.	
NH000	400V 500V	250V	125A	3	12.2	<b>03 243</b>	10
			6A	3	12.2	<b>03 523</b>	10
	10A		3	12.2	<b>03 524</b>	10	
	16A		3	12.2	<b>03 525</b>	10	
	20A		3	12.2	<b>03 526</b>	10	
	25A		3	12.2	<b>03 527</b>	10	
	35A		3	12.2	<b>03 528</b>	10	
	50A		3	12.2	<b>03 529</b>	10	
	63A		3	12.2	<b>03 530</b>	10	
	80A		3	12.2	<b>03 531</b>	10	
	100A		3	12.2	<b>03 532</b>	10	
NH00	690V	440V	125A	3	18.3	<b>03 533</b>	10
			160A	3	18.3	<b>03 534</b>	10
	250V	6A	3	12.7	<b>03 908</b>	10	
		10A	3	12.7	<b>03 909</b>	10	
		16A	3	12.7	<b>03 910</b>	10	
		20A	3	12.7	<b>03 911</b>	10	
		25A	3	12.7	<b>03 912</b>	10	
		32A	3	12.7	<b>03 913</b>	10	
		35A	3	12.7	<b>03 914</b>	10	
		40A	3	12.7	<b>03 915</b>	10	
		50A	3	12.7	<b>03 916</b>	10	
		63A	3	12.7	<b>03 917</b>	10	
		80A	3	19.0	<b>03 918</b>	10	
		100A	3	20.5	<b>03 919</b>	10	

### Cutting blade

Size	Rated current	Pack size	Weight kg/100 u.	Part no.	
NH00	160A	3	7.0	<b>03 161</b>	10
NH1	250A	3	14.9	<b>03 162</b>	10
NH2	400A	3	20.7	<b>03 163</b>	10
NH3	630A	3	28.0	<b>03 164</b>	10
NH4a	1600A	3	85.0	<b>03 185</b>	10

### NH universal slip-on handle

Size	Type	Pack size	Weight kg/100 u.	Part no.	
size 000 - 3	open	1	28.4	<b>03 502</b>	10

Size 000 NH fuses to DIN VDE 0636-2 can be used in size 00 NH fuses bases and NH switch fuse units.




03 571

## NH fuses

to DIN VDE 0636-2 / IEC / EN 60269-2

### gG / gL fuse link, 500V AC / 440V DC

Size	Rated voltage AC	Rated voltage DC	Rated current	Pack size	Weight kg/100 u.	Part no.		
NH1	500V	440V	20A	3	26.3	03 550	10	
			35A	3	26.3	03 552	10	
			50A	3	26.3	03 553	10	
			80A	3	26.3	03 555	10	
			100A	3	26.3	03 556	10	
			125A	3	26.3	03 557	10	
			160A	3	26.3	03 558	10	
			200A	3	26.3	03 559	10	
			224A	3	26.3	03 560	10	
			250A	3	26.3	03 561	10	
	690V	250V	160A	3	35.0	03 929	10	
			200A	3	35.0	03 930	10	
			250A	3	35.0	03 924	10	
NH2	500V	440V	50A	3	47.8	03 563	10	
			100A	3	47.8	03 566	10	
			160A	3	47.8	03 568	10	
			200A	3	47.8	03 569	10	
			224A	3	47.8	03 570	10	
			250A	3	47.8	03 571	10	
			300A	3	47.8	03 572	10	
			315A	3	47.8	03 573	10	
			250V	355A	3	47.8	03 574	10
				400A	3	47.8	03 575	10
	690V	250A		3	62.6	03 942	10	
		315A	3	62.6	03 943	10		
	NH3	500V	440V	315A	3	65.4	03 577	10
400A				3	65.4	03 579	10	
500A				3	65.4	03 581	10	
630A				3	65.4	03 582	10	
690V				400A	3	96.0	03 946	10
		500A		3	105.0	03 947	10	
NH4a		500V		440V	800A	1	260.0	03 181
	1000A		1		260.0	03 182	10	
	1250A		1		266.0	03 183	10	

Size 000 NH fuses to DIN VDE 0636-2 can be used in size 00 NH fuses bases and NH switch fuse units.





31 185

## Cylindrical gG fuses

Fuse link gG (gL)  
as per IEC 60269-2

Size	Rated current	Rated voltage	Rated breaking capacity	Power output	Pack size	Weight kg/100 u.	Part no.	
10 x 38	1A	500V	120kA	0.5W	10	0.6	31 008	17
	2A	500V	120kA	0.7W	10	0.6	31 182	17
	4A	500V	120kA	0.8W	10	0.6	31 183	17
	6A	500V	120kA	0.9W	10	0.6	31 184	17
	8A	500V	120kA	0.9W	10	0.6	31 009	17
	10A	500V	120kA	1.3W	10	0.6	31 185	17
	12A	500V	120kA	1.3W	10	0.6	31 010	17
	16A	500V	120kA	1.9W	10	0.6	31 186	17
	20A	500V	120kA	2.3W	10	0.6	31 187	17
	25A	500V	120kA	2.8W	10	0.6	31 188	17
	32A	400V	120kA	3.0W	10	0.6	31 189	17
14 x 51	2A	690V	80kA	0.8W	10	1.9	31 011	17
	6A	690V	80kA	1.0W	10	1.9	31 017	17
	10A	690V	120kA	1.8W	10	1.9	31 190	17
	16A	690V	80kA	2.5W	10	1.9	31 191	17
	20A	690V	80kA	3.0W	10	1.9	31 192	17
	25A	690V	80kA	3.5W	10	1.9	31 193	17
	32A	500V	80kA	3.8W	10	1.9	31 194	17
	40A	500V	80kA	4.4W	10	1.9	31 195	17
	50A	400V	120kA	4.7W	10	1.9	31 196	17
22 x 58	32A	690V	80kA	4.3W	10	5.0	31 198	17
	40A	690V	80kA	5.1W	10	5.0	31 199	17
	50A	690V	80kA	5.5W	10	5.0	31 200	17
	63A	690V	80kA	6.7W	10	5.0	31 201	17
	80A	500V	120kA	8.0W	10	5.0	31 202	17
	100A	500V	120kA	9.0W	10	5.0	31 203	17
	125A	400V	120kA	12.5W	10	5.0	31 204	17




31 366

## Cylindrical gG fuses

Fuse link gG (gL), with striker  
as per IEC 60269-2

Size	Rated current	Rated voltage	Rated breaking capacity	Power output	Pack size	Weight kg/100 u.	Part no.	
14 x 51	6A	500V	80kA	1.1W	10	2.0	31 366	17
	10A	500V	80kA	1.3W	10	2.0	31 368	17
	16A	500V	80kA	2.0W	10	2.0	31 370	17
	20A	500V	80kA	2.5W	10	2.0	31 371	17
	25A	500V	80kA	3.3W	10	2.0	31 372	17
	32A	500V	120kA	3.5W	10	2.0	31 373	17
	40A	500V	120kA	4.8W	10	2.0	31 374	17
22 x 58	50A	690V	80kA	5.2W	10	5.2	31 385	17
	63A	500V	80kA	6.9W	10	5.2	31 386	17
	80A	500V	80kA	7.8W	10	5.2	31 387	17




31 209

## Cylindrical gR fuses

### Fuse link gR as per IEC 60269-4

Size	Rated current	Rated voltage	Rated breaking capacity	Power output	Pack size	Weight kg/100 u.		Part no.	
10 x 38	1A	690V	200kA	0.9W	10	0.6		31 205	17
	2A	690V	200kA	1.0W	10	0.6		31 206	17
	4A	690V	200kA	1.1W	10	0.6		31 207	17
	6A	690V	200kA	1.6W	10	0.6		31 208	17
	10A	690V	200kA	2.1W	10	0.6		31 209	17
	12A	690V	200kA	3.1W	10	0.6		31 210	17
	16A	690V	200kA	4.4W	10	0.6		31 211	17
	20A	690V	200kA	5.8W	10	0.6		31 212	17
	25A	690V	200kA	6.8W	10	0.6		31 213	17
14 x 51	30A	690V	200kA	8.2W	10	0.6		31 214	17
	10A	690V	200kA	2.6W	10	1.9		31 215	17
	1A	690V	200kA	4.7W	10	1.9		31 216	17
	20A	690V	200kA	6.0W	10	1.9		31 217	17
	32A	690V	200kA	9.5W	10	1.9		31 219	17
	40A	690V	200kA	10.0W	10	1.9		31 220	17
22 x 58	50A	690V	200kA	12.0W	10	1.9		31 221	17
	40A	690V	200kA	12.0W	10	5.0		31 225	17
	50A	690V	200kA	15.0W	10	5.0		31 226	17
	63A	690V	200kA	16.0W	10	5.0		31 227	17
	80A	690V	200kA	18.0W	10	5.0		31 228	17
	100A	690V	200kA	19.0W	10	5.0		31 229	17



31 544

31 558

## Cylindrical gPV fuses

Fuse link gPV,  
as per IEC/EN 60 269-6, for photovoltaic applications

Size	Rated current	Rated voltage DC	Rated breaking capacity	Power output	Pack size	kg/100 u.	PG		
10 x 38	8A	1000V	30kA	1.6W	10	0.6		31 543	17
	10A	1000V	30kA	2.0W	10	0.6		31 544	17
	12A	1000V	30kA	2.4W	10	0.6		31 545	17
	16A	1000V	30kA	2.1W	10	0.6		31 546	17
	20A	1000V	30kA	2.5W	10	0.6		31 547	17
14 x 85	16A	1100V	30kA	3.8W	20	2.7		31 560	17
	20A	1100V	30kA	4.7W	20	2.7		31 559	17
	25A	1000V	30kA	5.9W	20	2.7		31 558	17
delivery on request									




31 252

## Cylindrical class CC fuses

### Fuse link class CC time delay as per UL 248-4

Size	Rated current	Rated voltage	Rated breaking capacity	Pack size	Weight kg/100 u.		Part no.	
class CC	0.5A	600V	200kA	10	0.8		31 394	17
	1A	600V	200kA	10	0.8		31 244	17
	1.5A	600V	200kA	10	0.8		31 395	17
	2A	600V	200kA	10	0.8		31 245	17
	2.5A	600V	200kA	10	0.8		31 396	17
	3A	600V	200kA	10	0.8		31 397	17
	4A	600V	200kA	10	0.8		31 246	17
	5A	600V	200kA	10	0.8		31 398	17
	6A	600V	200kA	10	0.8		31 247	17
	8A	600V	200kA	10	0.8		31 399	17
	10A	600V	200kA	10	0.8		31 248	17
	12A	600V	200kA	10	0.8		31 400	17
	15A	600V	200kA	10	0.8		31 249	17
	20A	600V	200kA	10	0.8		31 250	17
	25A	600V	200kA	10	0.8		31 251	17
30A	600V	200kA	10	0.8		31 252	17	

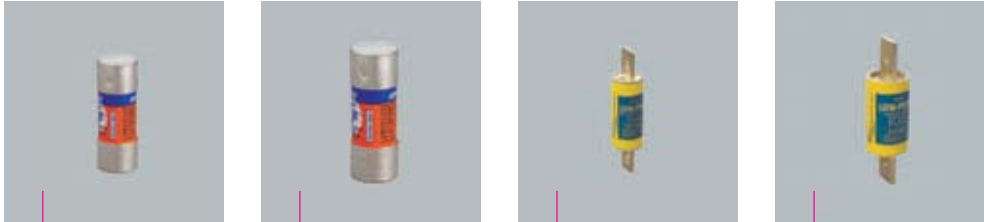


31 241

## Cylindrical class CC fuses

Fuse link class CC  
fast acting  
as per UL 248-4

Size	Rated current	Rated voltage	Rated breaking capacity	Pack size	Weight kg/100 u.	Part no.	
class CC	0.5A	600V	200kA	10	0.8	31 401	17
	1A	600V	200kA	10	0.8	31 235	17
	2A	600V	200kA	10	0.8	31 236	17
	3A	600V	200kA	10	0.8	31 404	17
	4A	600V	200kA	10	0.8	31 237	17
	5A	600V	200kA	10	0.8	31 405	17
	6A	600V	200kA	10	0.8	31 238	17
	8A	600V	200kA	10	0.8	31 406	17
	10A	600V	200kA	10	0.8	31 239	17
	12A	600V	200kA	10	0.8	31 407	17
	15A	600V	200kA	10	0.8	31 240	17
	20A	600V	200kA	10	0.8	31 241	17
	25A	600V	200kA	10	0.8	31 242	17
	30A	600V	200kA	10	0.8	31 243	17

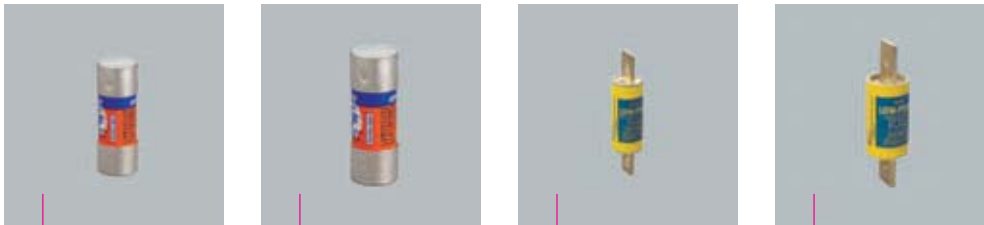


31 353	31 363	03 231	03 236
--------	--------	--------	--------

## Cylindrical class J fuses

Fuse link class J  
time delay  
as per UL 248-8

Size	Rated current	Rated voltage	Rated breaking capacity	Pack size	Weight kg/100 u.	Part no.	
class J, 21 x 57	1A	600V	200kA	10	5.0	31 333	16
	2A	600V	200kA	10	5.0	31 338	16
	3A	600V	200kA	10	5.0	31 342	16
	4A	600V	200kA	10	5.0	31 345	16
	6A	600V	200kA	10	5.0	31 349	16
	8A	600V	200kA	10	5.0	31 351	16
	10A	600V	200kA	10	5.0	31 353	16
	12A	600V	200kA	10	5.0	31 354	16
	1A	600V	200kA	10	5.0	31 355	16
	20A	600V	200kA	10	5.0	31 357	16
	25A	600V	200kA	10	5.0	31 358	16
	30A	600V	200kA	10	5.0	31 359	16
	class J, 27 x 60	35A	600V	200kA	10	8.5	31 360
40A		600V	200kA	10	8.5	31 361	16
45A		600V	200kA	10	8.5	31 362	16
50A		600V	200kA	10	8.5	31 363	16
60A		600V	200kA	10	8.5	31 364	16
class J, 29 x 118	70A	600V	200kA	1	14.5	03 228	16
	80A	600V	200kA	1	14.5	03 229	16
	90A	600V	200kA	1	14.5	03 230	16
	100A	600V	200kA	1	14.5	03 231	16
class J, 41 x 146	125A	600V	200kA	1	35.5	03 233	16
	150A	600V	200kA	1	35.5	03 234	16
	175A	600V	200kA	1	35.5	03 235	16
	200A	600V	200kA	1	35.5	03 236	16
class J, 54 x 181	250A	600V	200kA	1	67.0	03 238	16
	300A	600V	200kA	1	67.0	03 239	16
	350A	600V	200kA	1	67.0	03 240	16
	400A	600V	200kA	1	67.0	03 241	16



31 323	31 514	03 215	03 220
--------	--------	--------	--------

## Cylindrical class J fuses

### Fuse link class J fast acting as per UL 248-8

Size	Rated current	Rated voltage	Rated breaking capacity	Pack size	Weight kg/100 u.	Part no.	
class J, 21 x 57	10A	600V	200kA	10	5.0	31 323	16
	15A	600V	200kA	10	5.0	31 324	16
	20A	600V	200kA	10	5.0	31 325	16
	25A	600V	200kA	10	5.0	31 326	16
	30A	600V	200kA	10	5.0	31 327	16
class J, 27 x 60	35A	600V	200kA	10	8.5	31 511	16
	40A	600V	200kA	10	8.5	31 512	16
	50A	600V	200kA	10	8.5	31 514	16
	60A	600V	200kA	10	8.5	31 515	16
class J, 29 x 118	70A	600V	200kA	1	14.5	03 214	16
	80A	600V	200kA	1	14.5	03 215	16
	100A	600V	200kA	1	14.5	03 217	16
class J, 41 x 146	125A	600V	200kA	1	35.0	03 219	16
	150A	600V	200kA	1	35.5	03 220	16
	175A	600V	200kA	1	38.2	03 221	16
	200A	600V	200kA	1	35.5	03 222	16
class J, 54 x 181	250A	600V	200kA	1	67.0	03 224	16
	300A	600V	200kA	1	67.0	03 225	16
	350A	600V	200kA	1	67.0	03 226	16
	400A	600V	200kA	1	67.0	03 227	16