

# Switches

## LTHS01252\*A00

Type	LTHS 125
Number of Poles	2 NO
Mounting Position	Horizontal - Vertical
Control Voltage Rating [V <sub>dc</sub> ]	12 ÷ 800
Auxiliary Contact Blocks	Max 4 x (1 NO + 1 NC or 2 NO)
Block Type*	SK - SL - LP - RK
Arc chute Material	Polyester Resin
Contact Tips Material*	S6

\* For details please refer to dedicated technical note

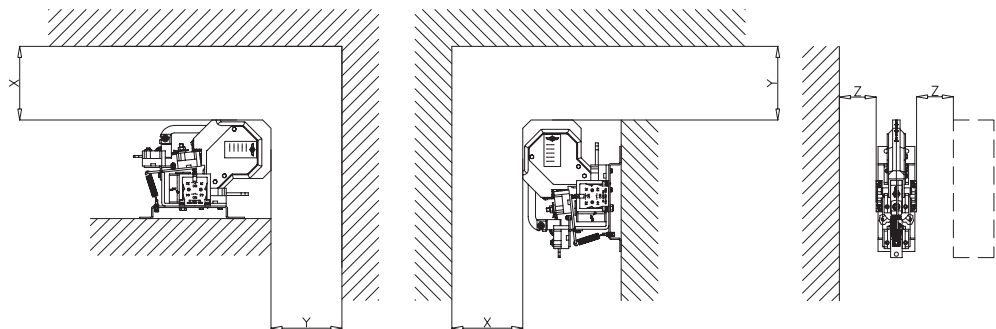
### Description

Contactor with single interruption in air, electromagnetic control by full power coil. Single state functioning. Reference standard IEC 60077.

### Electrical Characteristics

Rated Operational Voltage [V <sub>ac</sub> / V <sub>dc</sub> ]	750	
Max Operational Voltage [V <sub>ac</sub> / V <sub>dc</sub> ]	1000	
Rated Insulation Voltage [V]	1000	
	Series Connected	Parallel Connected
Conventional Free Air Thermal Current [A] at 75°C	125	250
DC-Rated Operational Current (τ=15ms) [A]		
750V	250	120
400V	480	230
DC-Maximum Breaking Capacity (τ=15ms) [A]		
750V	420	200
400V	800	380
AC-Maximum Breaking Capacity (cosφ=0,8; 50Hz) [A]		
750V	450	220
400V	820	400
Short Circuit Withstand Capacity for 5ms [kA]	5	8
Critical Current Range [A]	<3 at 750 V <sub>dc</sub>	<5 at 750 V <sub>dc</sub>
Fault Making Capacity [kA]	3	4.8
Component Category / Operational Frequency Class	A2 / C3	
Blow Out Circuit Type	Indirect	

Minimum clearances  
from metal parts [mm]  
X = 120; Y = 120; Z = 30



Microelettrica Scientifica

# Switches

LTHS01252\*A00

## Mechanical Characteristics

Mechanical Endurance (cycles)	2x10 <sup>6</sup>
Shock and Vibrations (IEC61373)	-
Weight [kg]	5.8

## Control Circuit

Control Voltage Range	0.7U <sub>c</sub> ÷ 1.25U <sub>c</sub>
Power Consumption (U <sub>c</sub> and T = 20°C) at Pick Up - when Holding [W]	24 - 24
Mechanical Operation Time (U <sub>c</sub> and T = 20°C) when Closing - Opening [ms]	130 - 18
Time Constant (L/R) at Pick Up - when Holding [ms]	72 - 82
Electrical Connections	Fast-On 6.35x0.8mm - Screw M4

## Auxiliary Contacts

Tips material	Solid Silver (Gold plating opt)
Rated Operational Voltage [V <sub>ac</sub> / V <sub>dc</sub> ]	250
Rated Current [A]	10 (RK=0.5)
Minimum Switching Current at 16V <sub>dc</sub> [mA]	20
Electrical Connections	Fast-On 6.35x0.8mm - Screw M4

## Environmental Conditions

Stock Temperature Range	-50°C ÷ +85°C
Operational Temperature Range	-40°C ÷ +75°C
Pollution Degree - Overvoltage Category (EN 50124-1)	PD3 / OV3
Max Altitude without Performance Derating [m]	1500

