



# COMO CS

Manual Cam Transfer Switches  
from 25 to 100 A

Transfer switches



COMO CS - Door mounting  
I-II 3 P 25 A



COMO CS in enclosure  
I-0-II 3 P 40 A

## The solution for

- > Industry  
(machine control)



## Strong points

- > Simple installation
- > Quick mounting
- > Effective in all circumstances

## Compliance with standards

- > IEC 60947-3



- > UL 60947-4-1



88EJ & 5LM6

\* cULus under certification.

## Function

COMO CS are manually operated multi-pole transfer switches. They ensure switching, transfer of sources or transfer of two low voltage circuits on load as well as their safe disconnection.

## Advantages

### Simple installation

The "quick fix" allows significant time saving in fixing the handle to the device. The devices sold in enclosed version are ready for installation.

### Quick mounting

The accessories offered are common to all the products in the range. The products are designed for installation:

- on the rear of the cabinet on a backplate,
- on the rear of the cabinet on a DIN rail,
- on the door with a direct handle.

### Effective in all circumstances

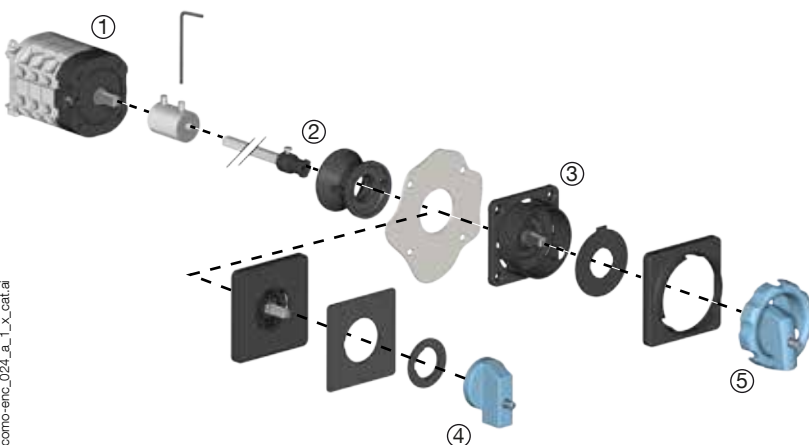
The devices are available with 3 standard switching types that can cover a wide variety of applications:

- I-II
- I-0-II
- I-0-II with bypass

Please consult us for adaptations to specific wiring diagrams.

## Configurations

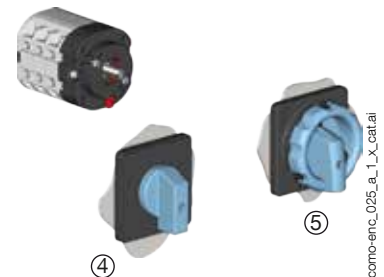
### Backplate switch mounted with external handle



Functional diagram (for further details see the installation instructions supplied with the product).  
1. Shaft extension

- 2. Shaft guide
- 3. Signalling plate
- 4. Non padlockable handle

### Direct quickfixing handle for door or backplate mounted switch



- 5. Padlockable handle

## References

### COMO CS

#### Backplate mounting with direct quickfixing handles or external handles

Rating (A)	N° of poles	Switching type	Switch body rear mounting <sup>(1)</sup>	Padlockable direct quick fixing handle	Non-padlockable direct quick fixing handle	Padlockable external handle <sup>(2)</sup>	Non-padlockable external handle <sup>(2)</sup>				
25 A	3 P	I - II	4320 <b>3002</b>								
	4 P	I - II	4320 <b>4002</b>								
	3 P	I - 0 - II	4330 <b>3002</b>								
	4 P	I - 0 - II	4330 <b>4002</b>								
	3 P	Bypass I - 0 - II	4350 <b>3002</b>								
	4 P	Bypass I - 0 - II	4350 <b>4002</b>								
40 A	3 P	I - II	4320 <b>3004</b>								
	4 P	I - II	4320 <b>4004</b>								
	3 P	I - 0 - II	4330 <b>3004</b>								
	4 P	I - 0 - II	4330 <b>4004</b>								
	3 P	Bypass I - 0 - II	4350 <b>3004</b>								
	4 P	Bypass I - 0 - II	4350 <b>4004</b>								
63 A	3 P	I - II	4320 <b>3006</b>					Blue/Black 4359 <b>3042</b>	Blue/Black 4359 <b>3022</b>	Blue/Black 4359 <b>1042</b>	Blue/Black 4359 <b>2022</b>
	4 P	I - II	4320 <b>4006</b>					Red/Yellow 4359 <b>3043</b>			
	3 P	I - 0 - II	4330 <b>3006</b>								
	4 P	I - 0 - II	4330 <b>4006</b>								
	3 P	Bypass I - 0 - II	4350 <b>3006</b>								
	4 P	Bypass I - 0 - II	4350 <b>4006</b>								
100 A	3 P	I - II	4320 <b>3010</b>								
	4 P	I - II	4320 <b>4010</b>								
	3 P	I - 0 - II	4330 <b>3010</b>								
	4 P	I - 0 - II	4330 <b>4010</b>								
	3 P	Bypass I - 0 - II	4350 <b>3010</b>								
	4 P	Bypass I - 0 - II	4350 <b>4010</b>								

(1) Mounting on DIN rail and backplate from 25 to 40 A and mounting on backplate for ratings from 63 to 100 A.

(2) Delivered with shaft and plate for front external control.

#### Door mounting with direct quickfixing handles

Rating (A)	N° of poles	Switching type	Switch body mounting on door	Padlockable direct quick fixing handle	Non-padlockable direct quick fixing handle		
25 A	3 P	I - II	4320 <b>3102</b>				
	4 P	I - II	4320 <b>4102</b>				
	3 P	I - 0 - II	4330 <b>3102</b>				
	4 P	I - 0 - II	4330 <b>4102</b>				
	3 P	Bypass I - 0 - II	4350 <b>3102</b>				
	4 P	Bypass I - 0 - II	4350 <b>4102</b>				
40 A	3 P	I - II	4320 <b>3104</b>				
	4 P	I - II	4320 <b>4104</b>				
	3 P	I - 0 - II	4330 <b>3104</b>				
	4 P	I - 0 - II	4330 <b>4104</b>				
	3 P	Bypass I - 0 - II	4350 <b>3104</b>				
	4 P	Bypass I - 0 - II	4350 <b>4104</b>				
63 A	3 P	I - II	4320 <b>3106</b>			Blue/Black 4359 <b>3042</b>	Blue/Black 4359 <b>3022</b>
	4 P	I - II	4320 <b>4106</b>			Red/Yellow 4359 <b>3043</b>	
	3 P	I - 0 - II	4330 <b>3106</b>				
	4 P	I - 0 - II	4330 <b>4106</b>				
	3 P	Bypass I - 0 - II	4350 <b>3106</b>				
	4 P	Bypass I - 0 - II	4350 <b>4106</b>				
100 A	3 P	I - II	4320 <b>3110</b>				
	4 P	I - II	4320 <b>4110</b>				
	3 P	I - 0 - II	4330 <b>3110</b>				
	4 P	I - 0 - II	4330 <b>4110</b>				
	3 P	Bypass I - 0 - II	4350 <b>3110</b>				
	4 P	Bypass I - 0 - II	4350 <b>4110</b>				

### Other solutions with enclosures

#### General characteristics



como-enc\_019\_a.eps

- Available for switching types I-II and I-0-II
- Different enclosure sizes adapted to your needs.
  - Maximum safety during maintenance operations due to triple padlocking of the handle in position 0 (position I for switching type I-II).
  - IP 65 / NEMA 4, 4X : When installed in an industrial environment, protection degree IP 65 and NEMA 4, 4X ensures that the products are protected against dust and water jets.
  - Red-yellow operating handle.

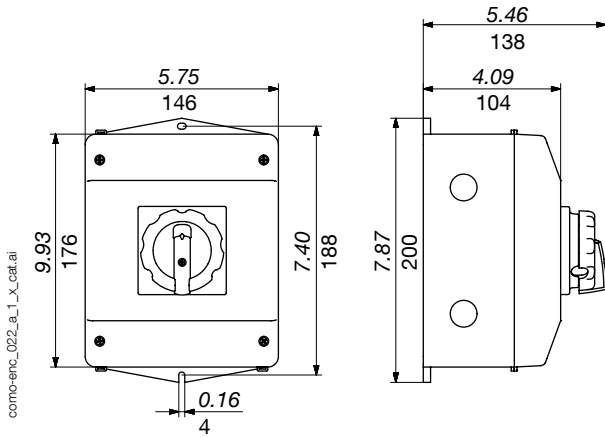
#### References

Rating (A)	No. of poles	Switching type	Reference
25 A	3 P	I - II	4321 <b>3C02</b>
	4 P	I - II	4321 <b>4C02</b>
	3 P	I - 0 - II	4331 <b>3C02</b>
	4 P	I - 0 - II	4331 <b>4C02</b>
40 A	3 P	I - II	4321 <b>3C04</b>
	4 P	I - II	4321 <b>4C04</b>
	3 P	I - 0 - II	4331 <b>3C04</b>
	4 P	I - 0 - II	4331 <b>4C04</b>
63 A	3 P	I - II	4321 <b>3C06</b>
	4 P	I - II	4321 <b>4C06</b>
	3 P	I - 0 - II	4331 <b>3C06</b>
	4 P	I - 0 - II	4331 <b>4C06</b>
100 A*	3 P	I - II	4321 <b>3C10</b>
	4 P	I - II	4321 <b>4C10</b>
	3 P	I - 0 - II	4331 <b>3C10</b>
	4 P	I - 0 - II	4331 <b>4C10</b>

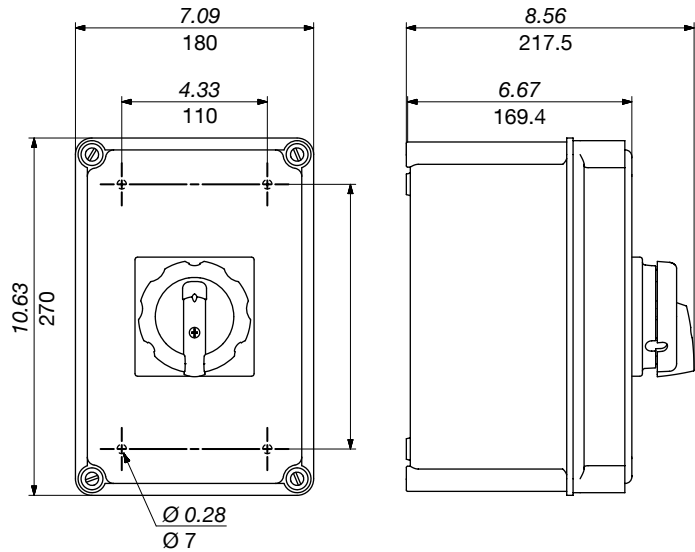
\* For an ambient temperature of 35 °C

#### Dimensions (in/mm)

##### 25 to 40 A



##### 63 to 100 A



como-enc\_023\_a\_1\_x\_catal

## Characteristics according to IEC 60947-3

### 25 to 100 A

<b>Conventional free air thermal current <math>I_{th}</math> at 40 °C (A)</b>	<b>25 A</b>	<b>40 A</b>	<b>63 A</b>	<b>100 A</b>
Conventional free air thermal current $I_{th}$ at 50 °C (A)	25	34	63	100
Conventional free air thermal current $I_{th}$ (60 °C) (A)	19	24	53	90
Rated insulation voltage $U_i$ (V)	690	690	690	690
Rated impulse withstand voltage $U_{imp}$ (kV)	4	6	6	6
<b>Rated operational currents <math>I_e</math> (A)</b>				
<b>Utilisation category at 400 VAC</b>				
AC-21A	25	40	63	100
AC-22A	20,5	40	63	100
AC-23A	15	29	63	63
AC-3	12	22		
<b>Utilisation category at 690 VAC</b>				
AC-21A	25	40	/	/
AC-22A	20,5	40	/	/
AC-23A	8,5	17	/	/
AC-3	7	12,8	/	/
<b>Operational power in AC-23 (kW)<sup>(1)</sup></b>				
At 400 VAC without pre-break AC	7,5	15	37	37
At 690 VAC without pre-break AC	4,8	15	/	/
<b>Fuse protected short-circuit withstand with gG DIN fuses</b>				
Prospective short-circuit (kA rms)	7	10	5	5
Associated fuse rating (A)	25	40	63	100
Rated operational voltage (Va.c)	690	690	415	415
<b>Connection</b>				
Minimum CU cable cross-section (mm <sup>2</sup> )	0,5	1	1.5	4
Smaximum CU cable cross-section (mm <sup>2</sup> )	4	10	16	35
Tightening torque min - max (Nm)	0.8-1.2	1.2-1.5	2.5	1.5
<b>Mechanical characteristics</b>				
Durability (number of operating cycles)	100 000	100 000	100 000	100 000
Weight of a 3 pole device (g)	109	184	440	440
Weight of a 4 pole device (g)	130	221	535	535

(1) The power is given for information only, the current values vary from one manufacturer to another.

## Characteristics according to UL 60947-4-1

### 25 to 100 A

<b>General use rating (A)</b>	<b>25 A</b>	<b>40 A</b>	<b>63 A</b>	<b>100 A</b>
UL certification file	88EJ		5LM6	
Short circuit rating at 600 VAC (kA)	10	5	/	
Type of fuse	RK5		/	
Max fuse rating (A)	150		/	
<b>Max horsepower rating (HP)</b>				
120 VAC / 1 phase	-	2	/	
120 VAC / 3 phase	-	5	/	
240 VAC / 1 phase	-	3	/	
240 VAC / 3 phase	-	10	/	
480 VAC / 3 phase	-	20	/	
600 VAC / 3 phase	5,2	20	/	
<b>Connection terminals</b>				
Solid wire (AWG)	#14-#12	#14-#8	#14-#4	#10-#2
Wire stripping distance (in/mm)	0.31 / 8	0.39 / 10	0.51 / 13	0.51 / 13
<b>Mechanical characteristics</b>				
Durability (number of operating cycles)	100000	100000	100000	100000
Tightening torque (Lb.in / N.m)	8.8 / 1	13.3 / 1.5	22,1 / 2.5	13.3 / 1.5
Weight of a 3 pole device (lb)	0.24	0.4	1	1
Weight of a 4 pole device (lb)	0.28	0.49	1.18	1.18

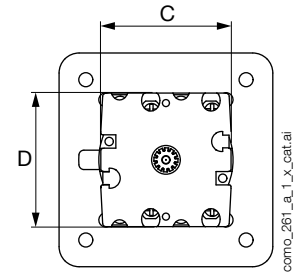
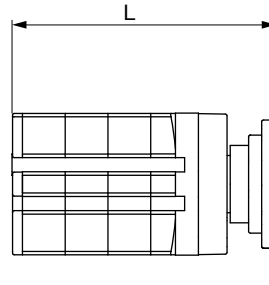
### Dimensions (in/mm)

#### 25 to 100A

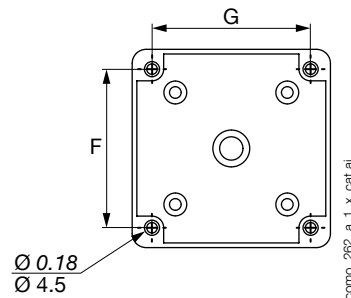
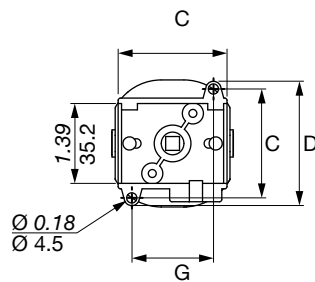
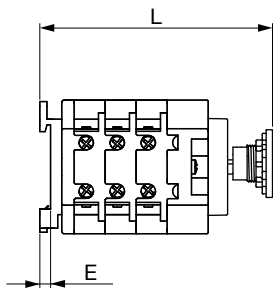
##### Mounting on door - Fixing with direct handle

Door width		
Unit	Mini	Maxi
in	0.04	1
mm	0.16	4

Rating (A)	Unit	I-II / I-0-II		L		Bypass I-0-II		C	D
		3 P	4 P	3 P	4 P				
25	in	3.19	3.66	4.13	4.61	1.54	1.57	1.54	1.57
	mm	81	93	105	117	39	40		
40	in	3.31	4.82	4.33	4.84	2.11	2.2	2.11	2.2
	mm	84	97	110	123	53.6	56		
63 - 100	in	4.45	5.28	6.1	6.93	2.91	2.8	2.91	2.8
	mm	113	134	155	176	74	71		



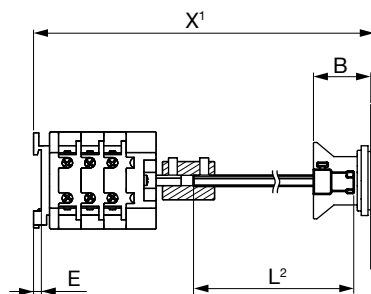
##### Mounting on backplate / DIN rail - Rear fixing of direct handle



Rating (A)	Unit	I-II / I-0-II		W		E	C	D	F	G
		3 P	4 P	3 P	4 P					
25	in	3.20	3.68	4.15	4.57	0.18	1.89	2.2	1.65	1.42
	mm	81.4	93.4	105.4	116.1	4.5	48	56	47	36
40	in	3.73	4.28	4.28	5.08	0.18	1.89	2.2	1.65	1.42
	mm	94.7	107.7	120.7	129	4.5	48	56	47	36
63 ... 100	in	5.10	5.97	6.83	7.54	-	2.99	2.99	2.68	2.68
	mm	129.5	151.5	173.5	191.5	-	76	76	68	68

##### Mounting on backplate / DIN rail - Rear fixing of external handle

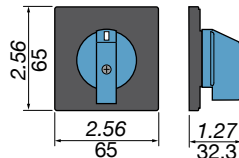
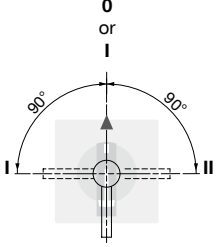
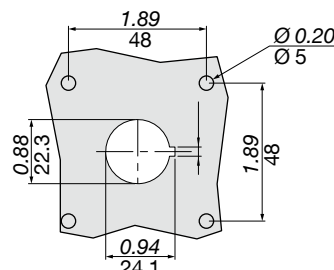
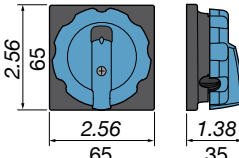
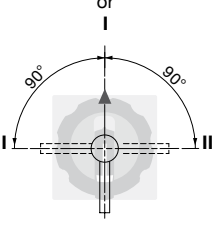
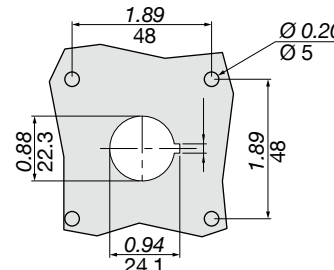
Rating (A)	Unit	X-L <sup>(3)</sup>		I-II / I-0-II		Bypass I-0-II		C	D
		3 P	4 P	3 P	4 P				
25	in	3.19	3.66	4.13	4.61	1.54	1.57	1.54	1.57
	mm	81	93	105	117	39	40		
40	in	3.31	4.82	4.33	4.84	2.11	2.2	2.11	2.2
	mm	84	97	110	123	53.6	56		
63...100	in	4.45	5.28	6.1	6.93	2.91	2.8	2.91	2.8
	mm	113	134	155	176	74	71		



(1) X is the distance between the inside of the door and the fixing plate  
 (2) L is the total length of the shaft (max 200 mm)  
 (3) Minimum distance between the inside of the door and the fixing plate

## Dimensions for handles

25 to 100 A

Handle type	<p style="text-align: center;"><b>Front operation</b></p> <p style="text-align: center;">Direction of operation</p>	Door drilling
<p><b>K1 type</b> non padlockable</p> 	<p style="text-align: center;">0 or I</p> 	 <p style="text-align: right; font-size: small;">poign_075_a_1_gb_cat.ai</p>
<p><b>K1 type</b> padlockable</p> 	<p style="text-align: center;">0 or I</p> 	 <p style="text-align: right; font-size: small;">poign_076_a_1_gb_cat.ai</p>